



The
Geological
Society

-serving science & profession



Colin Knipe Early Career Award Launch - Last Years' Finalists

Laura Westoby (Hydrock), Christopher Barry (Stantec) and Dan Roberts (GeoGrow)

10th November 2020 | Zoom Video Conference | 6:30pm start

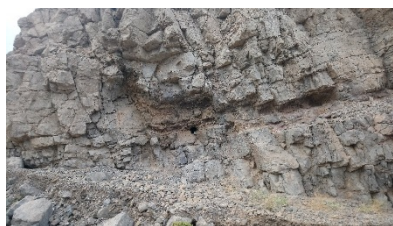
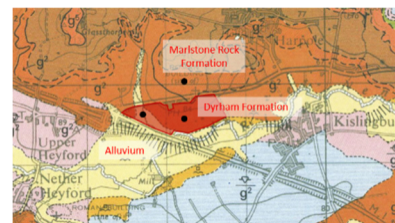
WMRG is launching its Colin Knipe early career award with talks from last years' finalists, to recognise geoscientists in their early stages of their careers. This competition is open to all Fellows with less than 10 years postgraduate experience, who might be working towards Chartership.



Abstracts:

Laura Westoby: (Hydrock):

Ground investigation and earthworks supervision was undertaken adjacent to the M1 Motorway in Northamptonshire. Proposed units were anticipated to range in size between approximately 92,000 sq. ft and 780,000 sq. ft, with foundation solutions expected to comprise a mixture of shallow pads and vibro-stone columns depending on the underlying geology. The presentation discusses the initial review of third-party data, the results of additional ground investigation and how the geology of the area was re-interpreted, then summarises the earthworks and reviews solutions that were adopted for issues encountered during the enabling works.



Christopher Barry (Stantec):

The Danakil Desert, in the East African Rift Valley in Ethiopia, is about 100 m below sea level and is the hottest location on Earth. Although rainfall is generally quite frequent (apart from during droughts), it occurs in short, intense storms that quickly run off the unvegetated mountainous terrain in dramatic flash floods. For a client needing to develop a reliable water supply for mining operations, the only realistic option is to extract groundwater. Our work for this client has been to investigate and model the multi-aquifer system and interaction of fresh, brackish, and brine groundwater.

e-mail

Get in touch

geolsoc_wmrg@live.co.uk

www

Find us on the web

www.geolsoc.org.uk/wmrg



Connect on LinkedIn

[WMRG ID: 4315899](https://www.linkedin.com/company/wmrg)



Join our Facebook Group

[WMRG
ID: 330578153706037](https://www.facebook.com/wmrg)



Follow us on Twitter

[@wmidsgeolsoc](https://twitter.com/wmidsgeolsoc)

Geological Society, Burlington House, Piccadilly, London, W1J 0BG

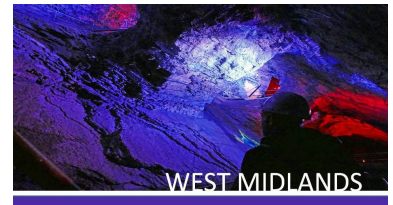
Tel: +44 (0)20 7434 9944 Fax: +44 (0)20 7439 8975 Email: enquiries@geolsoc.org.uk Web: www.geolsoc.org.uk

Registered Charity No. 210161



The
Geological
Society

serving science & profession



Dan Roberts (GeoGrow):

In recent years the upgrading of our motorway networks has been a high priority, this is most commonly achieved with "smart motorways" turning the hard shoulder into a running lane. In many cases this involves having to consider existing rock cuttings of varying stability often where limited information is available. The following is such an example from the M6 near Stafford. Where understanding the geology, failure mechanisms and history of an unstable rock cutting was a key deciding factor in the design and construction approaches taken on site.

About the Speakers:

- Laura Westoby studied Geology at the University of Leicester, graduating in 2013, and currently works as a Geotechnical Engineer for Hydrock.
- Christopher Barry is a Hydrogeologist working for Stantec, who began his career undertaking PhD studying the dissolution and movement of old DNAPL chemical spills into urban sandstone aquifers.
- Dan Roberts is a Geotechnical Engineer working for GeoGrow, who has spent the last 6 years working in the highways sector on large highways schemes in a range of geological settings.

Forthcoming Talks:

The WMRG is constantly on the lookout for fascinating talks. If you would like to present, or know someone who is willing, please contact the WMRG committee (details below) and we will try our very best to accommodate your requests.

In line with the thematic year programme, 2021 will be the Geological Society's Year of Space. The Year of Space will see the Society direct its gaze upwards, beyond the earth beneath our feet, towards the lesser explored corners of our universe. Space science seeks to answer some of life's biggest questions - why are we here, how did life evolve, and are we alone? Throughout 2021 the Society and WMRG will explore the geoscience of space through research conferences, lectures, our education programme and other activities.



Contact:

For all enquiries regarding the West Midlands Regional Group and events please contact us using the details below.

e-mail

Get in touch

geolsoc_wmrg@live.co.uk

www

Find us on the web

www.geolsoc.org.uk/wmrg



Connect on LinkedIn

[WMRG ID: 4315899](https://www.linkedin.com/company/wmrg)



Join our Facebook Group

[WMRG ID: 330578153706037](https://www.facebook.com/wmrg)



Follow us on Twitter

[@wmidsgeolsoc](https://twitter.com/wmidsgeolsoc)